

The logo features the text "IAPMO" in a large, bold, black sans-serif font. Below it, the words "GROUP" and "INDONESIA" are stacked in a smaller, bold, black sans-serif font. The text is centered within a white oval that has a green border. Behind the oval is a green shield-like shape.

# IAPMO

GROUP  
INDONESIA

ASSURANCE | CONFIDENCE | PROGRESSIVE





## ABOUT IAPMO GROUP

- Established in 1926 and has nearly 100 years of experience in the Plumbing industry.
- IAPMO's experience and product knowledge in Testing, Inspection and Certification has expanded beyond plumbing.
- IAPMO's global presence strategically located in 5 continents.
- A complete service organization
  - Code Development
  - Standard Development
  - Industry-leading Education and Professional Qualification
  - Conformity Assessment (Testing, Certification, Inspection, Evaluation Services, Management System Registration)



# Working Relationships

- Governments (such as U.S. EPA WaterSense®, U.S. EPA ENERGY STAR®, DOE, NIST, U.S. AID, etc.)
- Non Governmental Organizations (such as WHO, ANSI, ISO, ASME, ASSE, ASTM, PMI, etc.)
- MoUs with numerous entities in Taiwan, China, Indonesia, Europe, South America, and throughout the Asia Pacific Region
- Active involvement with World Plumbing Council (WPC)



International  
Organization for  
Standardization



American National Standards Institute



ASTM INTERNATIONAL



P.T. IAPMO GROUP INDONESIA



About The IAPMO Group

Since 1926

**“Putting the Health and Safety of public as priority for over 95 years”**



Sustainability



Codes-Education-Training



Product Certification



IAPMO R&T  
Lab China



Building Product Evaluations



Backflow Prevention Institute



Product Standard  
Development  
INDIA



IAPMO Group  
Indonesia



Australia & New Zealand



Test Laboratories



Electrical-Gas-Solar  
Product Certification



ASSE International



India Code Adoption  
& Training



Radiant Professionals Alliance



DISPENSING EQUIPMENT  
ALLIANCE  
IAPMO DEA



Supply Chain  
Service Provider

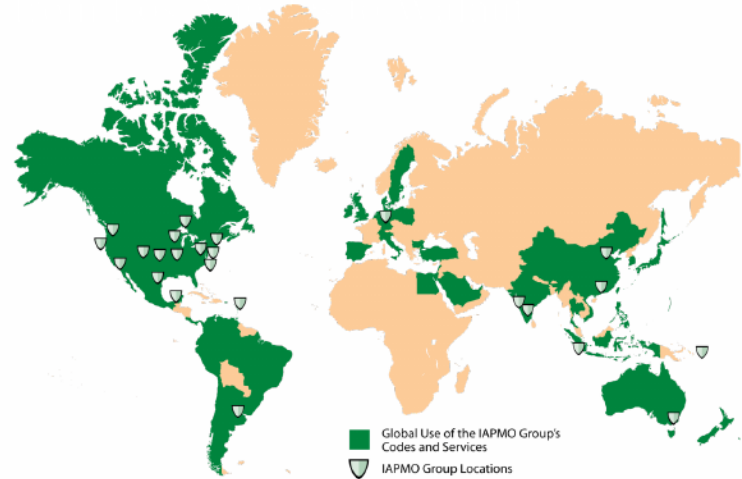


INSTITUTE OF  
BUILDING TECHNOLOGY  
Building Materials  
Test Laboratories



QUALITY CONTROL  
CONSULTANTS  
Inspection Body

- Now: The IAPMO Group has 28 offices all over the worlds with more than 5,000 members



#### IAPMO GROUP USA Regional Offices/Reps

Atlanta, Georgia  
Boston, Massachusetts  
Burke, Virginia  
Chicago, Illinois  
Dayton, New Jersey  
Denver, Colorado  
Greater Kansas City Metropolitan Area  
Houston, Texas  
Milwaukee, Wisconsin  
Portland, Oregon  
Scranton, Pennsylvania  
Seattle, Washington  
St. Thomas, US Virgin Islands  
Washington DC  
Wichita, Kansas

#### IAPMO GROUP International Offices/Reps

Abu Dhabi, United Arab Emirates  
Bangalore, India  
Beijing, China  
Buenos Aires, Argentina  
Bekasi, Indonesia  
Guangzhou, China  
Kuwait City, Kuwait  
Melbourne, Australia  
Monterrey, Mexico  
Ruhr, Germany  
Suva, Fiji  
Toronto, Canada  
York, England



P.T. IAPMO GROUP INDONESIA



## About IAPMO Group Indonesia





- Established on May 17, 2016
- Located in Cikarang, Bekasi
- [www.iapmoindonesia.org](http://www.iapmoindonesia.org)





## About Us

PT IAPMO Group Indonesia (IGI) is a complete service conformity assessment body and a subsidiary of the IAPMO Group with headquarter office in Ontario, California - USA.

IGI was established in 2016 to support the Indonesian government in the development of plumbing system standard and related conformity assessment activities. Since its inception, IGI has extended its commitment to the Indonesian government beyond plumbing to include supports for construction, building, mechanical, hygiene and sanitation, food equipment, and many more areas for standardization and conformity assessment. IGI also supports the advancement of green and sustainability measures in Indonesia.

IGI's head office and laboratory facility is located in Cikarang, Indonesia's largest industrial area, and is ready to serve industrial stakeholders to enter both the Indonesian market and international market.



[WWW.IAPMOINDONESIA.ORG](http://WWW.IAPMOINDONESIA.ORG)

# Accreditations



**Komite Akreditasi Nasional**

Laboratorium Penguji  
LP – 1079 – IDN



**Komite Akreditasi Nasional**

Lembaga Sertifikasi Produk  
LSPro – 054 – IDN



**Komite Akreditasi Nasional**

Lembaga Inspeksi  
LI – 162 – IDN



**Komite Akreditasi Nasional**

Lembaga Sertifikasi Ekolabel  
LSE-003-IDN



**Komite Akreditasi Nasional**

Lembaga Sertifikasi Person  
LSP – 019 – IDN



**Komite Akreditasi Nasional**

Lembaga Sertifikasi Sistem Mutu  
LSSM-043-IDN

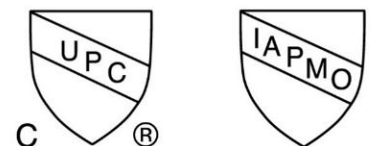


**Komite Akreditasi Nasional**

Lembaga Sertifikasi Sistem  
Manajemen Lingkungan  
LSSML-016-IDN



# ONE-STOP CONFORMITY ASSESSMENT SERVICES



[www.iapmoindonesia.org](http://www.iapmoindonesia.org)



## CERTIFICATION

### GREEN CERTIFICATION SCHEME

- Green Label Indonesia
- Ekolabel type 1
- Industri Hijau

For products: Bricks, Ceramic Tiles, Gypsum, Instant Mortar, Light Steel Profile, Portland Cement, PVC Pipe, Sheet Steel, Adhesive & Sealant, Block Glass, Carpet, Flat Glass, Floor Covering, Furniture, Paint & Coating, Sanitary Ware, Window Film, Air Conditioning, Lighting.

### PERSONNEL CERTIFICATION

Plumbing Specialist Level 1 to 4 based on SNI 8153:2015

### SYSTEM CERTIFICATION

- ISO 9001: Quality Management
- ISO 14001: Environmental Management
- ISO 45001: Occupational Health and Safety Management
- ISO 50001: Energy Management
- Hazard Analysis Critical Control Point (HACCP)
- Good Manufacturing Practice (GMP)

### PRODUCT CERTIFICATION

SNI Products: Ceramic Tile, Ceramic Tableware, Water Closet, Safety Glass: Tempered and Laminates, Mirror, Block Glass Pipes (PVC, PE, PP), Fittings (PVC, PE, PP), Water Meter, Water Tank, Steel pipe, Malleable Cast Iron Fitting, Plumbing fitting (faucet/tap, shower, waste fitting, flushing device), Plumbing fixtures (bathtub, urinal, wash basin/sink, lavatory), Sheet Steel, Profile Steel, Concrete Steel, Wire Steel, Portland Cement, High-Pressure Decorative Laminates, Wall and Decorative Paint, Cookware, Flatware, Truss

## TESTING

### MARKET ACCESS

SASO (Kingdom of Saudi Arabia), UAE (United Arab Emirates), cUPC (USA and Canada), WaterMark (Australia & New Zealand), etc.

### LABORATORY SERVICES

#### COMMODITY TESTING:

Ceramic Tile, Ceramic Tableware, Water Closet (Western & Eastern), Plumbing fitting (faucet/tap, shower, waste fitting, flushing device), Plumbing fixtures (bathtub, urinal, wash basin/sink, lavatory), Safety Glass: Tempered and Laminates, Mirror, Block Glass, Cookware, Flatware, Truss

#### OTHER TESTING:

Metal and alloy, coating, tensile <5000kgf, corrosion resistance, chemical and stain resistance, impact resistance

## INSPECTION

### INDUSTRIAL SERVICES

- Energy Audit for Mapping Energy Consumption
- Plant Safety Assessment
- Fire and Explosion Risk Assessment

### INSPECTION SERVICES

- Good Hygiene Rating Inspection Service for Hotel, Restaurants and Catering
- Hygiene Rating Inspection Service for UMKM

## TRAINING

### TRAINING SERVICES

- ISO 9001: Quality Management
- ISO 14001: Environmental Management
- ISO 45001: Occupational Health and Safety
- ISO 50001: Energy Management System
- Hygiene and Sanitation for Hotel, Catering, and Restaurants
- HACCP & GMP
- ISO 22000: Food Safety Management
- Plumbing Systems for Buildings (SNI 8153:2015)

# Certification Services

## Management Systems

- SNI ISO 9001
- SNI ISO 14001
- SNI ISO 45001
- SNI ISO 37001
- SNI ISO 27001
- SNI ISO 22000
- HACCP
- GMP

## Products

- SNI
- Ekolabel Tipe 1(LSE)
- Ekolabel Tipe 2 (LVE)
- Green Label Indonesia
- Industri Hijau

## Personnel

- Plumbing Associate Level 1 s/d Level 4





## MANAGEMENT SYSTEMS

Enabling you to increase capability to deliver consistent and improved services and products, thereby increasing value to customers and all other stakeholders.

- ◆ ISO 9001 ◆ ISO 14001 ◆ ISO 45001 ◆ ISO 37001 ◆
- ◆ ISO 27001 ◆ ISO 20000 ◆ HACCP ◆
- ◆ Good Manufacturing Practice (GMP) ◆





## PRODUCT CERTIFICATION

Enabling you to increase product competitiveness to enter into regional and international markets, as well as contributing to protect consumers, health, safety and the environment.

- ♦ Ceramic Tiles ♦ Ceramic Tableware ♦ Water Closet ♦
- ♦ Pipes (PVC, PE, PP) ♦ Fittings (PVC, PE, PP) ♦ PE Gas ♦ Water Meter
- ♦ Waterwheel ♦ Water Tank Fiberglass ♦ Steel Pipe ♦ Truss ♦ Plastic Polybag
- ♦ Concrete Brick ♦ Lightweight Brick ♦ Membrane water filter ♦
- ♦ Sheet Steel ♦ Profile Steel ♦ Portland Cement ♦
- ♦ High-Pressure Decorative Laminates-HPL ♦ Wall and Decorative Paint ♦
- ♦ Cookware ♦ Flatware ♦



## GREEN CERTIFICATION SCHEME

Enabling your access to green procurement and markets with a high requirement for sustainability purposes.

*Green Label Indonesia*  
*Ecolabel Type 1 and Type 2*  
*Industri Hijau*

- ◆ Light Bricks ◆ Ceramic Tiles ◆ Gypsum ◆
- ◆ Instant Mortar ◆ Paint ◆ Light Steel Profile ◆
- ◆ Portland Cement ◆ PVC Pipe ◆ Sheet Steel ◆
- ◆ Adhesive & Sealant ◆ Glass Block ◆ Carpet ◆
- ◆ Flat Glass ◆ Floor Covering ◆ Furniture ◆
- ◆ Paint & Coating ◆ Sanitary Ware ◆ HPL ◆
- ◆ Window Film ◆ Air Conditioning ◆ Lighting ◆
- ◆ Packaging ◆ PKRT ◆ Paper ◆ Wipes ◆
- ◆ Biodegradable Plastic ◆
- ◆ Detergents & Cleaning products ◆







## **PERSONNEL CERTIFICATION**

Enabling you to improve the level of personnel competency in the construction field

***Plumbing Specification Level 1 to 4  
Based on SNI 8153:2015***



# Testing Services

## Plumbing

- Product Fittings Supply and exhaust: Water faucet, shower head, hand shower, bidet, water shower faucet Ceramic sanitary
- Plumbing products: bidets, sinks, urinals, bathtubs
- Metal sanitary plumbing products; Kitchen sink
- Installation of water treatment from fiberglass material
- Water treatment equipment with ultra membrane
- Zinc coated steel pipe, PVC pipe and Fitting, PE pipe and Fitting, PP pipe and Fitting

## Base Metal

- Galvanized Steel
- Truss
- Cookware & Flatware

## Ceramic, Glass & Others

- Ceramic
- Tableware
- Mirror ,Safety Glass: Tempered and Laminates ,Glass Block
- HPL
- Waterwheel
- Concrete Brick, Lightweight Brick
- Polybag
- Membrane water Filter
- Material Fiberglass

**Test Methods: SNI, ISO, ASME, ASTM, AS/NZ, PNS, SASO, ES, GSO, ASSE**



## LABORATORY TESTING

Enabling you to test your products with various methods depending on your market destination. Our punctuality of testing lead time and professional expert advice will provide you with assurance for your products.

### COMMODITY TESTING:

- ♦ Ceramic Tiles ♦ Ceramic Tableware ♦ Water Closet (Western & Eastern) ♦
- ♦ Plumbing Fittings (Faucet/tap, shower, waste fitting, flushing device) ♦
- ♦ Truss ♦ Plumbing Fixtures (bathtub, urinal, wash basin/sink, lavatory) ♦
- ♦ Mirror ♦ Safety Glass: Tempered and Laminates ♦ Glass Block ♦ Cookware ♦
  - ♦ Flatware ♦ Plastic Polybag ♦ Concrete Brick ♦ Lightweight Brick ♦
  - ♦ Fiberglass ♦ Waterwheel ♦ Membrane Water Filter ♦
- ♦ Anti-microbial Testing on ceramic products ♦ Product Testing according to International standards with market destination Philippines, Australia, North America, Middle East, and Kingdom of Saudi Arabia ♦

### OTHER TESTING:

- ♦ Metal and Alloy ♦ Coating ♦ Tensile <5,000 kgf ♦ Corrosion Resistance ♦
- ♦ Chemical and Stain Resistance ♦ Impact Resistance ♦





## **MARKET ACCESS**

Enabling one-stop worldwide market access. This will help you have your products tested and certified to your desired destination market in time to take full advantage of new opportunities.

***SASO (Kingdom of Saudi Arabia),  
UAE (United Arab Emirates),  
cUPC (USA and Canada),  
WaterMark (Australia & New Zealand), etc.***



# Inspection Services

## HYGIENE & SANITATION INSPECTION

Enabling you to improve your establishment's level of hygiene and sanitation. This inspection will also allow you to implement a prerequisite program for a food safety management system.

*Hotel, Restaurants, Catering, Café, Aero Catering, Hospital Catering, Food Processors/Manufacturing*

- ◆ Good Hygiene Rating Program (HOREKA) ◆
- ◆ Hygiene Rating Program (UMKM) ◆

## ENERGY AUDIT

Enabling you to know your energy consumption mapping and the potential energy savings at your facilities. This energy efficiency program will be the foundation to implement ISO 50001 Energy Management System.

*Potential energy saving in industrial sectors, Offices, Hotels, and Commercial Buildings*

## SUPPLY CHAIN SERVICES

Enabling you to monitor the quality of products from your suppliers anywhere in the world, including ensuring timeliness of shipment. This will reduce scraps or rework of products you received from your suppliers, hence, it will improve your profit margin and increase your customer confidence level of your products.

*Supplier Audit, First Article Inspection, Pre-shipment Inspection, Sample testing, Inspection Management, Cargo Loading Supervision*

## PLANT SAFETY ASSESSMENT FIRE AND EXPLOSION RISK ASSESSMENT

Enabling you to improve your facilities' power, quality, electrical safety, and fire risk control. This assessment ensures the operation is safe and fit for services.

*Power quality improvement, electrical safety, infrastructure, fire and explosion risk assessment*



P.T. IAPMO GROUP INDONESIA



## ENERGY AUDIT

Enabling you to know your energy consumption mapping and the potential energy savings at your facilities. This energy efficiency program will be the foundation to implement ISO 50001 Energy Management System.

*Potential energy saving in industrial sectors, Offices, Hotels, and Commercial Buildings*





## **PLANT SAFETY ASSESSMENT FIRE AND EXPLOSION RISK ASSESSMENT**

Enabling you to improve your facilities' power, quality, electrical safety, and fire risk control.

This assessment ensures the operation is safe and fit for services.

***Power quality improvement, electrical safety,  
infrastructure, fire and explosion risk assessment***



## HYGIENE & SANITATION INSPECTION

Enabling you to improve your establishment's level of hygiene and sanitation. This inspection will also allow you to implement a prerequisite program for a food safety management system.

*Hotel, Restaurants, Catering, Café, Aero Catering, Hospital Catering, Food Processors/Manufacturing*

- ◆ Good Hygiene Rating Program (HOREKA) ◆
- ◆ Hygiene Rating Program (UMKM) ◆



# SUPPLY CHAIN SERVICES

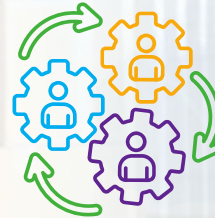
*Supplier Audit, First Article Inspection, Pre-shipment Inspection, Sample testing, Inspection Management, Cargo Loading Supervision*

**We cover all types of FMCG out of China, Asia and Globally, ranging from:**

- ◆ **Hardline, Furniture** ◆ **Electrical Appliance** ◆ **Electronic appliances** ◆
- ◆ **IT Products and Peripherals** ◆ **All plumbing equipment and accessories** ◆
- ◆ **Cooking appliances** ◆ **Building Materials** ◆ **Etc.** ◆



Our objectives are to **help buyers/manufacturers control, visualize and actively manage the quality and efficiency of orders/shipments.**



Capitalize on IAPMO's products know-how to integrate and apply the exact right techniques and processes to help **optimize supply chains and sourcing processes.**



Aim to provide a complementary seamless experience over global sourcing activities through a **one-stop-shop ensuring compliance of products, wherever they are made.**

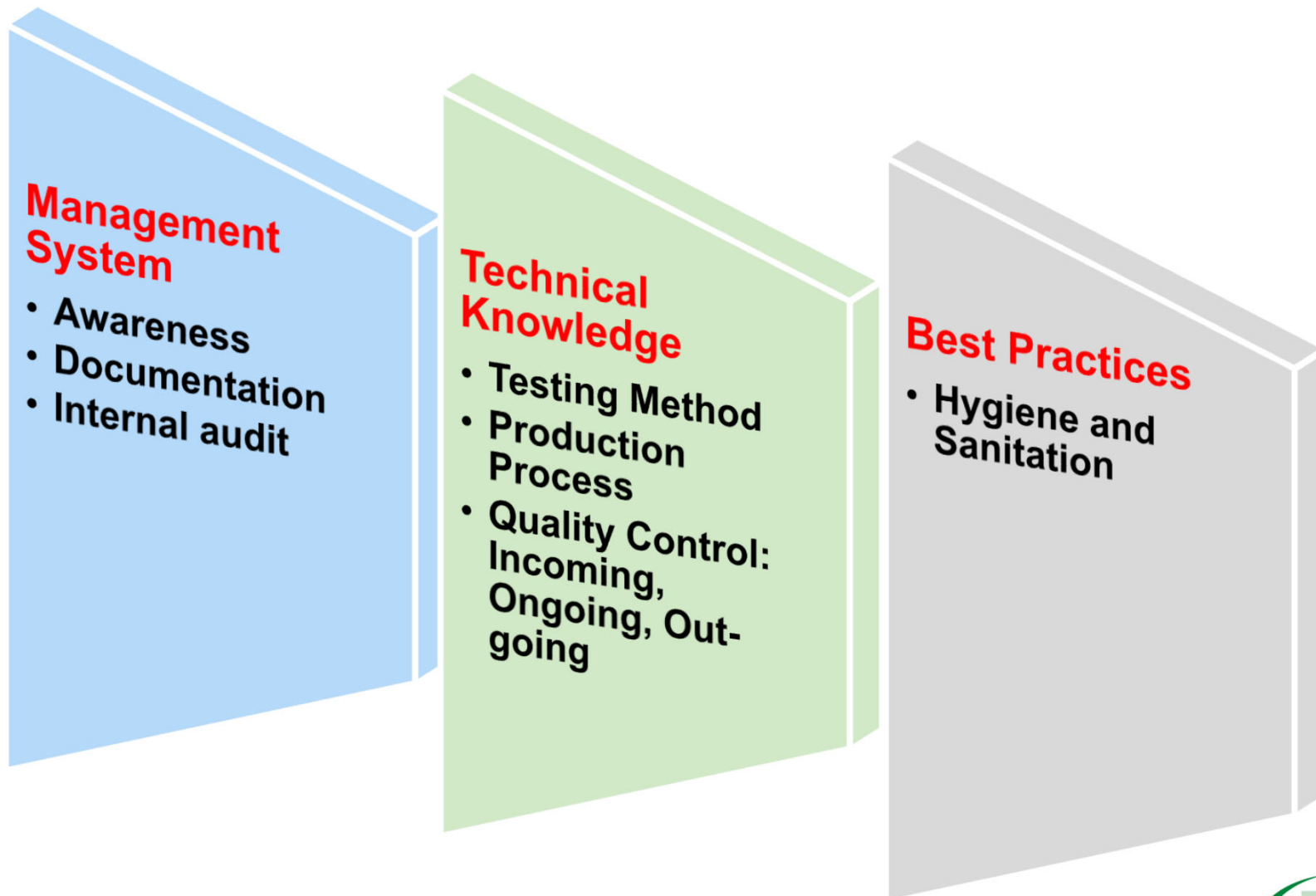


IAPMO uses a network of experienced professionals that are specially trained to **understand each client's specific needs** on top of best-in-class products background.



IAPMO tailors the programs to offer each client not standard, off the shelf services, but rather, to deliver the **customized service** they need.

# Training Services







## TRAINING

Enabling you to improve your personnel's gap competency. Our professional and experienced trainers will allow you to broaden your knowledge and share your issues to get the necessary solutions.

*Management Systems, Standard Knowledge, Testing Method Knowledge, Industry 4.0, Sustainability Knowledge, etc.*

# Some of Our Clients





PT IAPMO Group Indonesia  
[www.iapmoindonesia.org](http://www.iapmoindonesia.org)

Jl. Kapuk Timur Blok F23 No. 11 AA | Lippo Cikarang, Delta Silicon III | Bekasi 17750 | Jawa Barat - Indonesia  
P: +62-81-110-IAPMO (42766) | F: +62-21-89911468 | E: [info@iapmoindonesia.org](mailto:info@iapmoindonesia.org)



PTIAPMOIndonesia



@IAPMO\_Indonesia



@IAPMO



pt-iapmo-indonesia